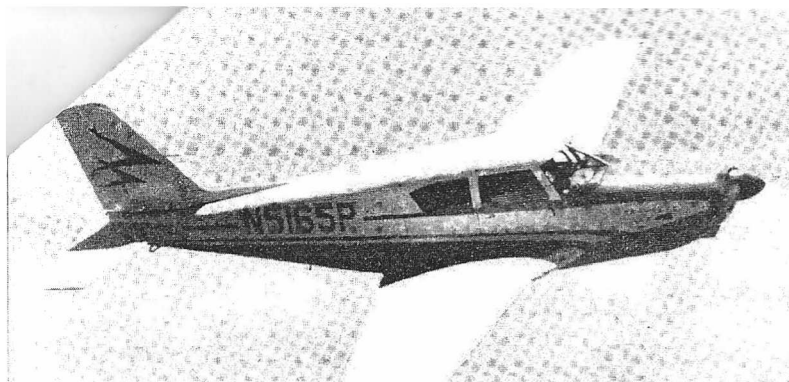


PRICE AND EQUIPMENT LIST

PIPER
Comanche **250**
250 HORSEPOWER

October 1, 1958





	PA-24 "250"
STANDARD	\$18,995
CUSTOM	20,575
SUPER CUSTOM	21,995
AUTOFLITE	22,745

STANDARD 250 HORSEPOWER

Comanche 250

STANDARD FEATURES AND EQUIPMENT

INSTRUMENTS

Airspeed	Fuel pressure gauge
Sensitive altimeter*	Manifold pressure gauge
Ammeter	Oil pressure gauge
Compass	Oil temperature gauge
2 fuel gauges	Recording tachometer

FUEL SYSTEM

Engine driven fuel pump	Quick drain gascolator
Electric auxiliary fuel pump	Quick oil drain
Engine primer	Two 30-gallon rubber cell fuel tanks giving 60-gallon standard capacity

POWER PLANT

ENGINE—Lycoming O-540 A1A, 250 hp @ 2575 rpm, 6-cylinder, dual ignition.
Constant speed controllable propeller with spinner
Engine machined for vacuum pump (no drive installed).
Governor drive 35 amp generator
Shielding Geared starter
Fuel pump

ELECTRICAL PROVISIONS

12 volt-33 amp battery	Cabin speaker and front and rear dome lights
Navigation lights	Headphone and mike jacks
Instrument panel lights with rheostat	Circuit breakers
2 landing lights	

CONTROLS, CABIN FEATURES AND ACCESSORIES

Cabin heater and defroster with controls	Door, ignition and baggage locks—all with same key	Landing gear warning horn and light
Cabin ventilators	4 arm rests	Shock-mounted instrument panel
Dual flight controls	Assist straps	Adjustable front and rear seats
Mixture control	Cigarette lighter and 4 ash trays	Quickly removable rear seat for stretcher, camera or cargo
Carburetor air control	Coat hooks	Stall warning indicator
Vernier prop control	Glove compartment in right panel	Mike holder

AIRCRAFT FEATURES

Cleveland 600 x 6 wheels and disk brakes with double pressure plates; Scott parking brake valve with control
Tow bar, stowed in baggage compartment
Tiedown rings

CUSTOM

Comanche 250

In addition to instruments and equipment of the Standard Comanche 250, the Custom Comanche 250 has the following instruments and radio equipment:

Headset, microphone and 2 antennas
Vacuum pump drive and vacuum pump

Advanced instrument panel * with
Artificial horizon, Directional gyro,
Electric turn and bank, Rate of climb,
Clock, Outside air temperature gauge.

NARCO SUPERHOMER

12-channel VHF transmitter with 121.5, 121.7, 121.9, 122.1, 122.5, 122.6, 122.7, 122.8 and 123.0 mc crystals installed; VHF receiver tuned for 108 to 126 mc; Omni-navigation; low frequency receiver (200-400 kc range, 500-1700 kc broadcast) with separate power supply.

SUPER CUSTOM

Comanche 250

In addition to the Custom equipment, the Super Custom has:

NARCO OMNIGATOR MARK II

Deluxe two-way VHF communications and Omni-navigation. Includes 27-channel transmitter with 24 crystals installed, 118.1, 118.3, 118.5, 118.7, 118.9, 119.1, 119.3, 119.5, 119.7, 119.9, 120.1, 120.3, 120.5, 120.7, 120.9, 121.1, 121.3, 121.5, 121.7, 121.9, 122.1, 122.5, 122.7, 122.8.

(Replaces the Narco Superhomer and LF receiver of the Custom.)

Also includes tunable VHF receiver, Omni converter and indicators, ILS localizer, 75 mc marker beacon, "whistle-stop" tuning and Model V-12 MP-2A power supply.

LEAR ADF 12-E

Combined automatic direction finder, broadcast receiver, radio range and communications receiver. Three-band reception (190-430 kc, 480-1025 kc, 1025-1725 kc). Ferrodynamic loop, hermetically sealed against dust and moisture, assuring dependable performance under all climatic conditions.

**Gyro and sensitive instruments are reconditioned surplus—CAA certified.*

AUTOFLITE

Comanche 250

In addition to Super Custom equipment, the AutoFlite Comanche 250 has Piper AutoControl, transistorized automatic flight unit that derives information from the artificial horizon and directional gyro. Makes turns automatically and holds precise course with Heading Lock.

STANDARD COLOR COMBINATIONS

Choice of Daytona White with Santa Fe Red or Hershey Brown or Bahama Blue or Montego Green.



Comanche 250 ACCESSORIES

Available when ordered 10 weeks in advance of delivery date.

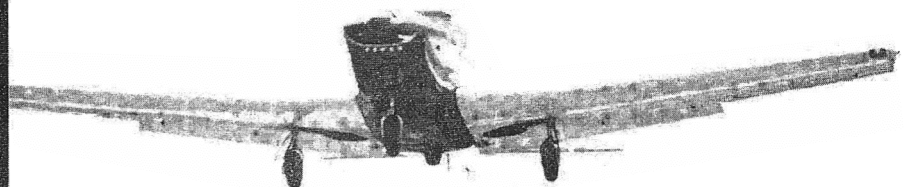
Grimes Rotating Beacon	\$140.00
Heated Pitot Tube	50.00
Narco Omnigator Mark II with 24 crystals and low frequency receiver, to replace Superhomer and LF receiver in Custom model	460.00
(Superhomer price of \$775 is credited against Omnigator price of \$1,235.)	
Sunair S5-DTR, 5-channel, HF trans-receiver with loading coil and trailing antenna	1,200.00
ON SUPER CUSTOM MODEL	
Narco Simplexer—27-channel transceiver, 25 crystals supplied, with V-12 MP-2A power supply	720.00

RADIO CREDIT, where Custom PA-24 is ordered without radio \$775.00

These accessories have been approved in order to fill individual requirements.
It's recommended that you choose your accessories with care, with due consideration given the weight penalties involved.

FACTORY CERTIFIED SERVICE

is available to Piper owners the world over, wherever this sign is displayed. Factory-trained mechanics and complete stocks of parts assure expert, reliable service.



The relatively low price of the Comanche 250 is the result of extensive tooling combined with straight-line production methods for maximum efficiency in assembling this remarkable airplane. Because special installations or modifications would hamper the Comanche production line and delay delivery dates, only the equipment listed here can be ordered for factory installation. Other modifications and equipment installations can be handled promptly by your Piper Sales Agency shop.

PIPER AIRCRAFT CORPORATION, LOCK HAVEN, PA., U. S. A.

COMPARISON OF 1959 MODELS OF THE ONLY FAST, FOUR-PLACE, SINGLE-ENGINE
BUSINESS AIRCRAFT

<u>SIZE</u>		<u>Comanche "250"</u>	<u>Beech K-35</u>
Shoulder room - front seat		44.5"	42.5"
Shoulder room - rear seat		44	41
Head room - front		37	37
Head room - rear		37	37
Leg room - front (from seat back to rudder pedals)		37.25-45.25"	37.5-38.5"
Leg room - rear (seat back to spar or other restriction)		44-46"	40"
Distance between rear seat and back of front seat		7.5-13"	8.5
Overall height of fuselage, outside		52"	57
<u>PERFORMANCE</u>			
Rate of Climb - Sea Level (full gross load)		1400 ft/min	1170 ft/min
Cruising speed - 75% power @ 7,000 ft.		182	200
High Speed (full throttle at Sea Level)		190	210
Cruising Range (55% power) @ 10,000 ft.		970 miles on 59 gals.	1080 miles on 59 gals.
<u>WEIGHT</u>		<u>Comanche "250"</u> <u>Autoflite</u>	<u>K-35 with</u> <u>factory in-</u> <u>stalled</u> <u>Autopilot</u>
Maximum Allowable Gross Weight		2800	2950
Empty weight	1661		1832
Vacuum system	Included		6
Auxiliary Fuel Tanks	-		18
Autopilot	Included		9
Dual control wheel	Included		3
Narco VTR-2 Omnigator	Included		24
Lear ADF-12E2	Included		28
Heated Pitot Tube	<u>1</u>	<u>1662</u>	<u>1921</u>
<u>USEFUL LOAD</u>		1138	1029
Less 60 gals. Aviation Fuel		<u>360</u>	<u>360</u>
Available for passengers, baggage, cargo, etc.		778 pounds	669
PENALTY109 pounds
<u>PRICE</u>			
Basic Airplane		\$ 22,745.00	\$ 25,300.00
Complete Vacuum System		Included	240.00
Auxiliary Wing Fuel Tanks		-	725.00
Manufacturer's Factory-Installed Autopilot		Included	2,595.00
Heated Pitot Tube		50.00	60.00
Dual Control Wheel		Included	125.00
Radio: Narco VTR-2 Omnigator		Included	1,275.00
Lear ADF-12E2		Included	1,200.00
Delivery - Factory to Philadelphia area		<u>Included</u>	<u>200.00</u>
T O T A L		\$ 22,795.00	\$ 31,720.00
PENALTY	(difference of \$ 8,925.00 plus 3% Pa. Sales Tax		9,192.75